

MENTOR

AUSCARE 



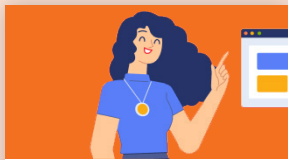
What is a MENTOR?

Your Mentor from Auscare Support will assist your child or teen with developing new skills and building confidence. They could support your child's interests, accompany them to activities, and even research what is available in the community for them to try. Our aim is to listen to your child and focus on their specific needs.

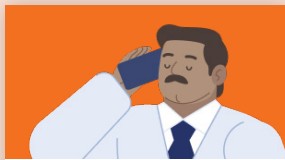
The great thing about Auscare Support is that we:



Focus on
your child



Let them
make choices



Stand beside
your child

Choose Auscare Support to help your child connect with the world in a more meaningful way.

Here are a few things to think through before you speak with an Auscare Support Mentor.

Do I have the right funding for a MENTOR?

Take a few minutes to look through the hard copy of your plan.
Do you have the right funding in your plan?

You will need:



CORE SUPPORTS

Access to
Community Social
and Recreational
Activities



CAPACITY BUILDING INCREASED SOCIAL AND COMMUNITY PARTICIPATION

Life Transition Planning Including
Mentoring, Peer Support and
Individual Skill Development

Your Core Supports budget is extremely flexible. You can choose the person you want, as well as the day and time that suits, and for the purpose that suits.

How can I engage with AUSCARE SUPPORT?

Are you already accessing services with other supports?
Do you have enough funds left in your core budget?

If you still have budget left, get in contact with Auscare Support.

Get started with Auscare SUPPORT TODAY

AUSCARE 

1800 940 515

auscaresupport.com.au

info@auscaresupport.com.au

What type of support can YOUR CHILD EXPECT?

Before your first consultation with your Auscare Support Mentor, take some time to think through what your child would like to achieve when working with us.

Here's a simple checklist to work through.

What are the goals for your child in their plan?

.....

What activities would your child like to do more of or learn?

.....

Thinking about past support you received, what did you learn about your child's needs? What worked and what didn't?

.....

What are your current supports and how are they going?

.....

Do you need more services or less?

.....

Help us find a GENUINE CONNECTION

Auscare Support mentors don't just show up to tick a box. We aim to find a genuine point of connection with your child.

We have created a list of some of the characteristics and interests we could try to match.

Circle those that are your priorities and let us know why:

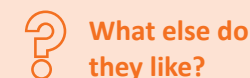
GENDER

SEXUAL ORIENTATION

AGE

PERSONALITY

HOBBIES:



WHAT ELSE?

.....

.....

.....

.....